

“The ultimate goal of the CSEP is to protect the welfare of children on the Nez Perce Reservation, through the establishment and enforcement of child support orders. By assuring that financial support is provided for these children we believe that a cycle of non-support will be broken and future generations of children will be provided for by their parents without intervention.”

**FOR MORE INFORMATION
PLEASE CONTACT US AT
(208) 843-7362**

Carla Timentwa, CSEP Director
Connie Guillory, Lead Case Manager
Jena Henry, Case Worker
Lana Rickman, Case Worker
Janice Ellenwood, Outreach Specialist
Michelle Penney, Admin Financial Specialist
Carmel McCurdy, Prosecutor Attorney
Marla Cuevas-Jimenez, Court Clerk
Hattie Brown, Office Assistant II

**Office Hours:
Monday-Friday
8:00am to 4:30pm**



Child Support Enforcement Program

102 Lolo Street
PO Box 365
Lapwai, ID. 83540

Phone: 208-843-7362
Fax: 208-843-7388

www.nezperce.org/official/childsupportenforcement

Nez Perce Tribe

Judicial Services Division

Child Support Enforcement Program



HOW TO APPLY FOR CHILD SUPPORT SERVICES

Tel: 208-843-7362



Child Support Enforcement Program

Mission Statement

“Among the NiMiiPuu, children are seen as gifts from the Creator. They represent the future of the Tribe and a link to the value of our culture. In our language, there is no word for orphan. Each child is the center of a circle with deep relationships to his biological parents, his blood relatives and his fellow tribal members. Adults must put the children first to ensure they are properly nurtured and developed.”

Eligibility

You may apply for services if:

- ✓ You are the child’s parent, legal guardian/caretaker; and
- ✓ The child for whom you are seeking child support payments is under 18 years of age or is attending high school.

Please keep in mind that if jurisdictional issues arise it may take longer to process your application.



CSE Program Services:

- Find a noncustodial parent
- Establish paternity for a child
- Establish an order for financial and/or medical support
- Collect child support payments
- Modify your present child support order
- Provide internet access to Idaho Child Support to view your client file at www.welfare.idaho.gov

CSE Program can assist with:

- Mediation Services
- Information regarding legal language and court proceedings
- Educational outreach on the importance of parental involvement and healthy relationships.

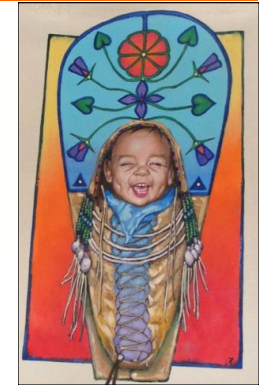
APPLICATION PROCESS

To request child support services you must complete an application packet. There are three ways to apply.

1. You may download and print the application form from www.nezperce.org website
2. Request one be mailed to you by calling the Child Support Enforcement Program office at (208) 843-7362
3. Pick up an application packet at the Child Support Enforcement Program office at: Tribal Court Judicial Building 102 Lolo Street, Lapwai, Idaho.

Please include with the application a copy of:

- Court documents relating to child custody or divorce decree
- Certified copies of any child support orders you already have, including copies of any modifications to those orders
- A certified copy of the birth certificate for each child. If both parents signed an Acknowledgement of Paternity, we need a copy of that form
- Proof of health care coverage already in place for the child
- Certified copy of all child support payments previously made by the other parent. Please include a listing of all payments you received directly from the other parent
- Social Security cards for you and the children
- Copy of tribal enrollment card or any other pending enrollment application or CIB



We Promote the well being of children through support